

KM-3050/KM-4050/KM-5050

▶ print ▶ copy ▶ scan ▶ fax

A3 MONOCHROME MULTIFUNCTIONALS

# EFFICIENT TOOLS THAT MEET YOUR EVERY EXPECTATION.



 KYOCERA

# THE **KEY** TO OFFICE PERFORMANCE: DAY TO DAY PRODUCTIVITY.

## EASY TO USE AND BUILT TO LAST



Two simple principles underpin the KM-3050, KM-4050 and KM-5050. The first is that for technology to be useful, it has to be easy to use. The second is that any mechanical device has to cope effortlessly with constant use. Simple to operate and with long-life components, these multifunctionals fulfil both criteria.

Allied to top-level reliability and efficiency, Kyocera system software ensures smooth cross-network co-ordination. Helping you carry out everyday tasks with maximum productivity, you can rely on the KM-3050, KM-4050 and KM-5050 to get things done.



One machine for printing, copying, scanning and faxing – it's natural to be a little apprehensive of a multifunctional. But as with any effective business tool, if it's uncomplicated it immediately becomes an indispensable part of your armoury. This is where the KM-3050, KM-4050 and KM-5050 excel. Effortlessly simple to operate and robust enough to handle a wide range of tasks, they raise your document processing capabilities to a new level.

#### **Double-sided colour scanning**

Scan both sides of a document in full colour in just one pass.

#### **User-friendly colour touch panel**

Clear and easy to read, it leads you through every task.

#### **Colour thumbnail viewing**

Lets you easily find and preview documents easily before printing and copying.

#### **PDF direct printing**

Print PDFs direct, either from PC or USB memory stick.

#### **40GB document box as standard**

Massive hard disk memory lets you save documents on the multifunctional itself and output them direct without a PC.

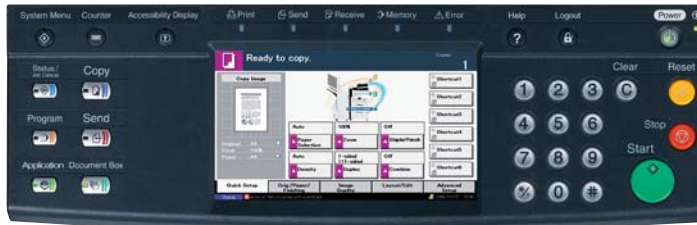
#### **Long-life components**

Durable components increase longevity and reduce downtime.



## SIMPLE OPERATION

The colour touch panel makes the KM-3050, KM-4050 and KM-5050 so easy to use. A full 8 inches wide, its innovative layout and colour screen ensure operation is simplicity itself. Help keys and a help guidance function illustrate operational procedures to enable any user to perform the most advanced functions. Documents saved on the device's hard disk are



shown on the panel as colour thumbnails, allowing you to identify the exact pages to be printed, copied or faxed.

The colour touch panel: big, clear and easy to use.

A USB port is located just to the right of the colour touch panel, where it's easily accessible. Plug in a memory stick and PDFs that are stored on it can be printed direct. Convenient and secure too, since it lowers the risk of documents being left at the device and being seen by a third party.



USB port lets you print direct from a USB memory stick.



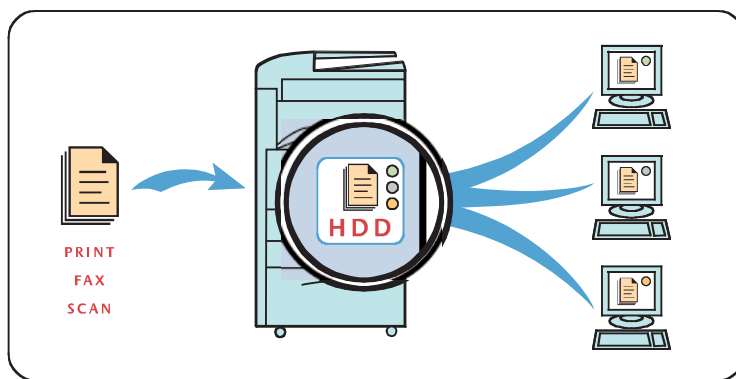
## NOT JUST COLOUR SCANNING, BUT DOUBLE-SIDED COLOUR SCANNING

The addition of an optional document processor lets you scan documents in colour. Not only that, it lets you scan both sides of an original in just one pass. Double-sided colour scanning adds another level of convenience and flexibility to the workplace.

## MULTITASKING MADE EASY

A new Kyocera architecture allows multiple jobs to be processed simultaneously. For example, it's possible to print while scanning, or send a fax while copying. It means different workgroups always have the multifunctional at their disposal with no hanging around waiting for one job to finish so another can begin. The same kind of flexibility is provided by the ability to scan to different locations, including e-mail and FTP servers.

You can also save documents, including scans and incoming faxes, in document boxes on the multifunctional's hard drive. These can then be output directly without

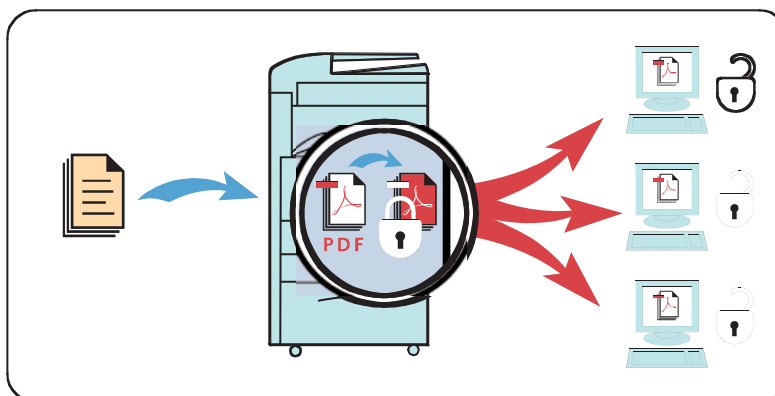


a PC. It's a convenient place to store frequently printed items such as report covers, letterheads and so on.

Documents saved to document boxes on the hard drive can be printed direct.

## SECURING YOUR DOCUMENTS

With any multifunctional, data created by copying, printing, scanning and faxing remains on the hard drive until it's overwritten by new, incoming data. However, during the time it stays on the hard drive, it can be viewed by anyone. To provide you with extra peace of mind a Data Security Kit can be added. This option automatically encrypts data when it's written and erases it as soon as a job ends. Even if the hard drive is stolen there's no chance of the address book being read, since all the information it contains is also encrypted.



For extra security, you can protect PDFs with a password. You give a PDF a password at the scanning stage, then every time you need to open it you key in the password again.

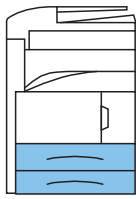
1. Set password when scanning.
2. Key in password to open PDF

## DIFFERENT CONFIGURATIONS FOR DIFFERENT REQUIREMENTS

The great advantage of the KM-3050's, KM-4050's and KM-5050's modular design is that many configurations are possible. Two 500-sheet paper cassettes, a 200-sheet manual paper feeder and a duplex unit for double-sided printing and copying come as standard with each model. From then on, it's a matter of setting up the multifunctional to suit your specific needs.

### Base version

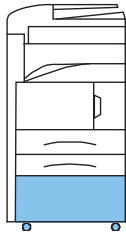
Two 500-sheet paper cassettes and a 200-sheet multi-purpose tray provide a generous paper reserve.



**Standard configuration**  
with optional dual scan document processor (DP-700)

### Extended base functionality

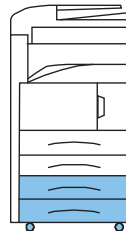
An additional paper cabinet protects your paper and is convenient when paper storage rooms are far away.



**CB-700/CB-710**

### Flexibility

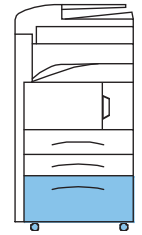
Two additional 500-sheet paper cassettes enable fast, convenient access to multiple paper types.



**PF-700**

### High capacity

This 3,000-sheet paper feeder is ideal if your office regularly has to handle large print runs.



**PF-750**

### Entry level

When a finisher is required but you're short of space, you can add a 500-sheet internal staple finisher.



**DF-720**

### Basic finishing solution

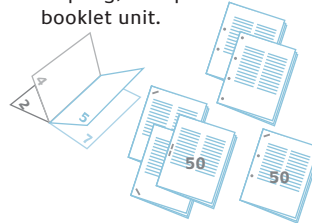
For a professional finish to documents you can add a 1,000-sheet staple finisher.



**DF-730**

### Advanced finishing solution

Add a 3,000-sheet finisher with stapling, hole-punch and booklet unit.



**DF-710 + PH-5C + BF-710**

### Departmental

To separate different users' output, add a convenient mailbox with 7 trays.



**MT-710**

## BEYOND THE BOX

**KYOWare™**  
**SOLUTIONS**

With broad international experience in printing, scanning, copying, faxing and archiving documents, Kyocera is in a unique position to offer custom solutions that streamline the entire workflow process and maximise your return on investment in office equipment. To achieve this, Kyocera employs its own software developers and partners with leading providers in the fields of accounting, security, document management and system management.

## DESIGNED TO SUIT EVERYONE

The KM-3050, KM-4050 and KM-5050 are designed for maximum performance both inside and out. At any time, a quick glance at the machine status LED tells you what the machine is doing. The control panel tilts, making it suitable for wheelchair access as well as making it readable in all light conditions.

### Portable clip and staple

No need to go searching for paper and staples. They are right here.

### Machine status

Shows what task the machine is performing.

### Easy-to-open paper cassette

Make refilling simple.

### Cleaning-cloth case

Conveniently located to ensure the device stays in top condition.

### Adjustable control panel

Readable in all light conditions, even in direct sunlight.

### Multi-purpose tray

For short print runs or for printing on transparencies, heavy stock, labels and so on.



# KM-3050/KM-4050/KM-5050

## A3 MONOCHROME MULTIFUNCTIONALS

The KM-3050, KM-4050 and KM-5050 incorporate extremely durable components that guarantee efficient and reliable operation to meet the demanding requirements of busy office environments. The KM-3050, KM-4050 and KM-5050 increase productivity and maximise uptime whilst ensuring a minimal impact on the environment.

### GENERAL

**Technology:** Kyocera Laser, Mono component  
**Engine speed:**  
KM-3050: Max. 30/20 pages per minute A4/A3  
KM-4050: Max. 40/23 pages per minute A4/A3  
KM-5050: Max. 50/26 pages per minute A4/A3  
**Resolution:** 600 x 600 dpi (copy), 1,800 dpi level x 600 dpi (photo mode), 1200 dpi quality (print)  
**Time to first copy:**  
KM-3050: 3.9 seconds or less  
KM-4050/KM-5050: 3.5 seconds or less  
**Warm-up time:** 30 seconds or less from power on  
**Power source:** AC 220 - 240 V, 50/60 Hz  
**Power consumption:** Printing: 1,010 W, Stand-by: 230 W, Power-Saving (ECOpower): 17 W  
**Noise (ISO 7779):** Printing: 69 dB(A), Stand-by: 52 dB(A), Power-Saving (ECOpower): Immeasurably low  
**Dimensions (W x D x H):** Main unit: 599 x 646 x 745 mm  
**Weight:** Main unit: Approx. 85 kg  
**Certifications:** TÜV/GS, CE, ISO 15408  
This product is manufactured according to ISO 9001 quality standard and ISO 14001 environmental standard.

### PAPER HANDLING

All paper capacities quoted are based on a paper thickness of max. 0.11 mm.

**Input capacity:** 2 x 500-sheet universal paper feeder, 60-105 g/m<sup>2</sup>, A3-A5R, Folio  
200-sheet multi-purpose tray, 45-200 g/m<sup>2</sup>, A3-A6R, Folio, envelopes  
Max. input capacity with options: 4,200 sheets  
Duplex as standard supports A3-A5, 60-80 g/m<sup>2</sup>  
**Output capacity:** 250 sheets face-down

### COPY FUNCTIONS

**Max. original size:** A3  
**Continuous copying:** 1-999  
**Memory capacity:** Standard 512 MB, max. 1 GB, standard 80GB HDD (system shared)  
**Zoom range:** 25-400% in 1% steps (with DP-700: 25-200%)  
**Preset magnification ratios:** 5R / 5E  
**Digital features:** Interrupt output job, scan once print may, electronic sort, rotate sort, rotate copy, N-up copy, split copy, cover mode, page numbering, box image overlay, margin shift, border erase  
**Exposure mode:** Auto, manual: 7 or 13 steps  
**Image adjustments:** Text + photo, text, photo

Your Kyocera Business Partner:

## Paragon Document Solutions Limited

Head office:

21 Effie Road  
Fulham  
London  
SW6 1EN

Contact us:  
www.paragon-ds.co.uk  
0845 521 1420  
info@paragon-ds.co.uk

### PRINT FUNCTIONS

**Processor:** PowerPC 750FL / 600 MHz (System Shared)  
**Memory:** Standard 512 MB, max. 1 GB, standard 40 GB HDD  
**Emulations:** PCL6 incl. PCL, KPDL 3 (PostScript 3 compatible)  
Line Printer, IBM Proprinter X24E, Epson LQ-850, Diablo 630, KC-GL, PDF direct print  
**Controller language:** PRESCRIBE IIe  
**Fonts:** 80 outline fonts (PCL6), 136 PostScript KPDL 3 fonts, 1 bitmap font, 45 types of one-dimensional barcodes plus two-dimensional barcode (PDF-417)  
Downloadable fonts: Kyocera, PCL + TrueType format, Type 1 + 3 format  
**Features:** eMPS - for quick copy, proof and hold, private print, job storage and job management functionality with hard disk

### Interfaces

**Standard interface:** High speed bi-directional parallel (IEEE 1284), USB 2.0 (Hi-Speed), USB Host Interface dedicated for USB Flash Memory device, Fast Ethernet 10-Base-T/100Base-TX, CF slot

**Multiple interface connection (MIC):** Allows simultaneous data transfer via up to four interfaces, with each interface having its own virtual printer.

### SCAN FUNCTIONS

**Functionality:** Scan-to-SMB/FTP, scan-to-email, scan-to-BOX, network TWAIN, BOX TWAIN

**Scan speed:** 50 originals per minute in b/w (600 dpi/A4), 25 originals per minute in colour (600 dpi/A4)

**Scan resolution:** 600, 400, 300, 200 x 400, 200 x 100 dpi (256 greyscales, 256 colour)

**Max. scan size:** A3

**Original recognition:** Text, photo, text + photo, OCR

**Interface:** 10Base-T/100Base-TX

**Network protocol:** TCP/IP

**File types:** Mono: TIFF, PDF  
Colour: JPEG, PDF, TIFF (JPEG)

**Compression format:** B/W: G4 (MMR), Colour: JPEG

**Bundle software:** KM-NET Viewer, TWAIN source, PaperPort

\*colour scanning in resolution of 400 dpi and above requires additional memory

### FAX FUNCTIONS (OPTIONAL)

**Compatibility:** ITU-T Super G3

**Modem speed:** Max. 33.6 kbps

**Transmission speed:** 3 seconds or less (JBIG)

**Scanning density:** Normal: 8 dot/mm x 3.85 line/mm, Fine: 8 dot/mm x 7.7 line/mm, Superfine: 8 dot/mm x 15.4 line/mm, Ultrafine: 16 dot/mm x 15.4 line/mm, SUFine: 600 x 600 dpi

**Max. original size:** A3

**Compression method:** JBIG, MMR, MR, MH

**Memory:** Standard 120MB (enable fax image back up)

**Features:** Network faxing, rotate transmission, confidential, relay and bulletin board transmission delivery to document box

### OPTIONS

#### Fax System (M)

#### Paper handling

**DP-700 Document processor:** 100 sheets, 45-160 g/m<sup>2</sup>, A3-A5R, Folio (RADF), Dual side and colour scan

**PF-700 Paper feeder:** 2 x 500 sheets, 60-105 g/m<sup>2</sup>, A3, A4, A4R, A5R, B4, B5, B5R, Letter, Letter-R, Legal, Ledger, Folio, STMT

**PF-750 Paper feeder:** Max. 3,000 sheets, 60-105 g/m<sup>2</sup>, A4, B5, Letter

#### DF-710 Document finisher + AK-700\*

Main tray: Max. 3,000 sheets A4 or 1,500 sheets A3

face-down, 60-200 g/m<sup>2</sup>, A3-B5,

Sub tray left: Max. 200 sheets A4 or 100 sheets A3/B4

face-up, 45-200g/m<sup>2</sup>, A3-A6R,

Sub tray right: Max. 50 sheets A4 face-up, 45-200 g/m<sup>2</sup>, A4-A6R,

Stapling: Max. 50 sheets A4 or 30 sheets A3, stapling at 3 positions

**DF-720 Document finisher:** Max. 500 sheets A4 or 250 sheets A3, Folio, 60-80 g/m<sup>2</sup>, one position

stapling max. 30 sheets A4 or 20 sheets A3

**DF-730 Document finisher + AK-700\*:** Max. 1,000 sheets A4 or 500 sheets A3/B4, 64-128 g/m<sup>2</sup>, A3-B5, one position

stapling max. 30 sheets A4 or 20 sheets A3/B4, 64-128 g/m<sup>2</sup>

**PH-5C Punch unit for DF-710:** A3-A5R, 45-200 g/m<sup>2</sup>, 2-hole/4-hole

**MT-710 Mailbox for DF-710:** 7 bins, 60-80 g/m<sup>2</sup>, A3-A5R,

7 bins x 100 sheets A4 or 50 sheets A3/B4

**BF-710 Booklet unit for DF-710:** Max. 64 pages (16 sheets)

booklet folding and stapling, 60-80 g/m<sup>2</sup>, cover sheet

60-200 g/m<sup>2</sup>, A3, B4, A4R

**JS-700 Job separator:** 100 sheets internal job separator,

45-160 g/m<sup>2</sup>, A3-A5R

\*Attachment Kit AK-700 is required for the use of DF-710/DF-730 document finisher.

### Memory

**DIMM memory:** 512 MB memory, DDR-SDRAM DIMM

(184 pin PC2700): 2 slots (1 slot empty), max. 1 GB

**CompactFlash® card:** 1 slot (up to 4 GB) for forms, fonts,

logos, macro storage

### Security

**Data security kit (C)**

**UG-30:** PDF expansion kit (high compression, encryption file)

### Optional interface for print stations

**IB-11 Serial interface:** RS-232C serial interface

(max. 115.2 kbps)

**SB-70 Network card:** Wireless LAN - IEEE 802.11b

**SB-110FX Network card:** 10Base-T/100Base-TX/100Base-FX,

FibreOptic

### Others

**Platen cover**

**DT-700:** Document tray

**CB-700 Cabinet:** Cabinet to store paper and toner stocks

### CONSUMABLES

**TK-715 Toner-kit:** Microfine toner for 34,000 pages with 6% coverage



## Select your options to suit your needs:



Punch unit (PH-5C)

Document finisher (DF-710)

Booklet unit (BF-710)

Paper feeder (PF-750)

Product depicted includes optional extras